

DESIGN SPECIFICATION	
BASEFRAME / REFER BASEFRAME LAYOUTS FOR DETAILS	
BEARER	150 x 75mm PFC, TOES OUT
OUTRIGGER/SPREADER	100 x 50mm PFC
BRACING ANGLE	50 x 50 x 5mm EQUAL ANGLE
END MEMBER	100 x 50mm PFC
LIFTING MECHANISMS	EXTENDABLE OUTRIGGERS
TOW LUG	8mm PLATE / Ø30mm HOLE
STEELWORK TREATMENT	FINISHED WITH ANTI CORROSIVE BLACK ENAMEL / TOW LUGS = CLARKE GREEN / LIFTING POINTS = SAFETY YELLOW
FLOOR FRAME / REFER BASEFRAME LAYOUTS FOR DETAILS	
JOISTS	C10015 @ 480 CENTRES
CAPPER	C10415
END JOIST	100 x 100 x 4mm SHS

FLOORING	
FLOOR SHEET	17mm TONGUE AND GROOVE PLYWOOD F11
FLOOR COVERING	2.0mm VINYL - (SEALED) ARMSTRONG ARMATRANS NEUTRAL GREY
SKIRTING	PVC D MOULD - GREY
COMPLEXING	-
WATERPROOFING	-
OTHER	DRY FLOOR WASTES WITH PLUGS

WALLS	
INTERNAL HEIGHT	2400mm
INTERNAL LINING	4mm POLYPLY PRE-FINISHED EMBOSSED PLYWOOD - GREY
INTERNAL TRIM	PVC D MOULD - GREY (GREY WAFER HD SCREWS)
WALL INSULATION	R1.8 (75mm)
EXTERNAL CLADDING	COLORBOND PANELRIB, LAID HORIZONTALLY - SURFMIST
EXTERNAL CORNER	HD 40x40x2.5mm D'GAL ANGLE, SILICONE SEAL WALL TO FLOOR

WALL FRAMES	
FRAMING	75 x 41 x 0.75mm G550 STEEL STUDS
STUD SPACING	400mm CTS (WIND REGION N3)
STRAP BRACING	WALLS TO FLOOR & WALLS TO CEILING STRAP BRACED EVERY 1200mm WITH 125 x 30 x 1.2mm BUILDERS STRAP - 8/18x20mm SCREWS x 4

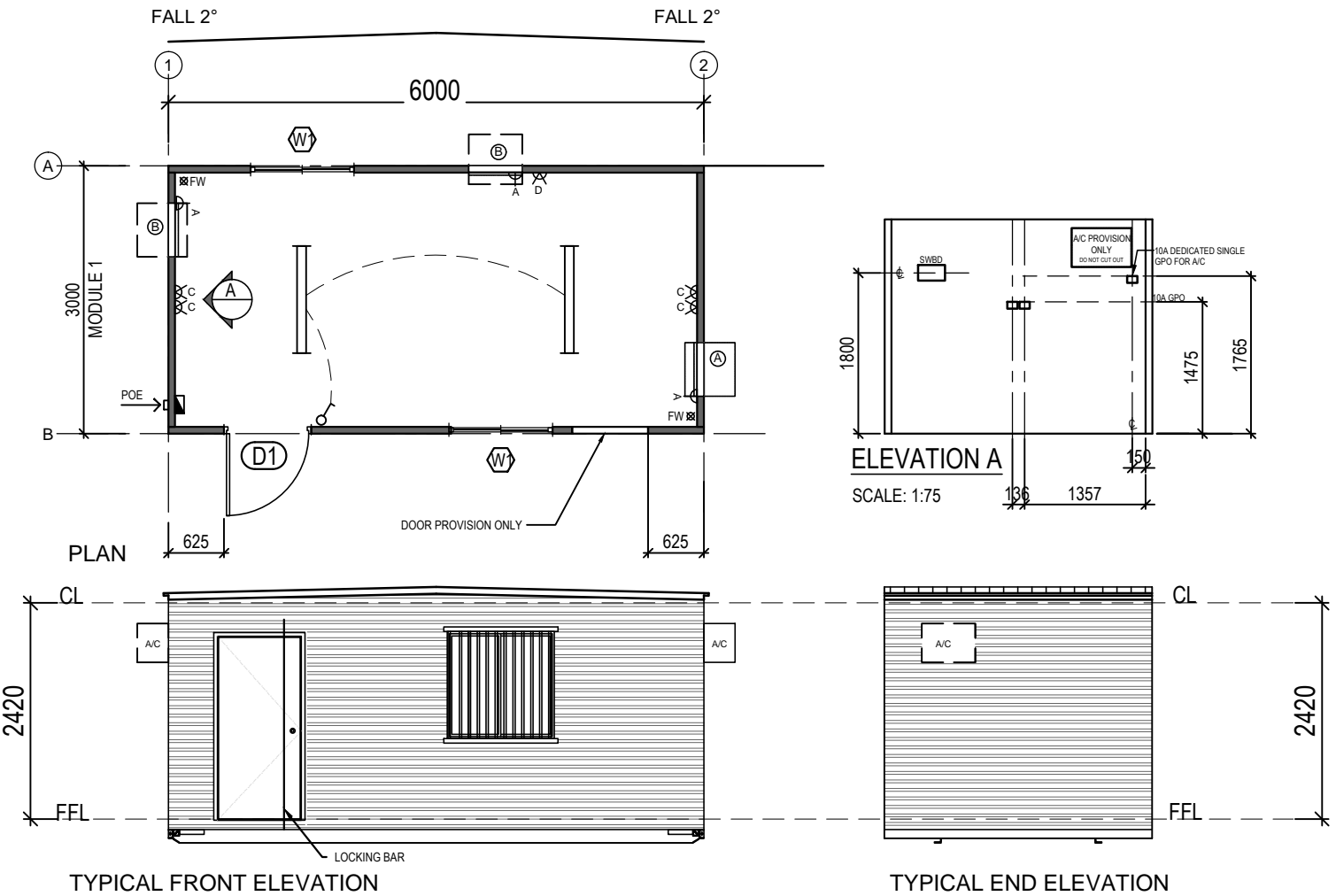
ROOF / CEILING	
CEILING TYPE	FLAT
CEILING LINING	4mm PRE-FINISHED PLYWOOD - MIRAGE PEARL
CEILING INSULATION	R1.8 (75MM)
ROOF PITCH	2° CENTRE PITCH
ROOF CLADDING	TRIMDECK 0.42 BMT - ZINCALUME
ROOF INSULATION	-
UNDER BARGE FLASHING	ZINC
BARGE	WOODLAND GREY
GUTTER	NIL
DOWNPIPE	NIL
STEPDOWN FLASHING	30 x 60 STEP DOWNS - WOODLAND GREY

ROOF / CEILING FRAMES	
FRAMING	75 x 41 x 0.75mm G550 STEEL STUDS
STUD SPACING	400mm CTS (WIND REGION N3)

ELECTRICS	
SPECIFICATION	TO AS3000, 3001, 3012
S/W BOARD	P.O.E. LOCATED BEHIND SWITCHBOARD, POLY PLASTIC INTERNALLY MOUNTED SWITCHBOARD, 1800mm AFFL(TO CTR)

ITEMS & EQUIPMENT SCHEDULE		
TAG	QTY	DESCRIPTION
A	1	FRAME FOR A/C CUT OUT - 435h x 670w FRAME OPENING & FIT A/C SUPPLIED BY COATES HIRE
B	2	FRAMEOUT FOR A/C, DO NOT CUT

NOTES:  
 COATES SIGNS - 1 / PER BUILDING @ TOP RIGHT CORNERS  
 COATES ASSET TAGS - FIT BESIDE ENTRY DOOR @ LOCK  
 ALLOW NOGS IN CEILINGS AND EXTERNAL WALL FOR FUTURE PARTITIONS



**GENERAL ARRANGEMENT**  
SCALE: 1:75

DOOR SCHEDULE												
TAG	SIZE	QTY	LOCATION	COLOUR	FURNITURE	LOCKING	KEYING	ARCHITRAVE	GLASS	CLOSER	STOP	NOTES
D1	2040 x 920mm	1	EXTERNAL	SURFMIST	KNOB	PASSAGE SET	-	PVC	-	NIL	YES	NOTES: "DO NOT" REBATE BOTTOM OF DOORS FOR DOOR SWING TO MISS VERANDAH DECKING CABIN HOOK REBATED EDGE; SECURITY - ZINC PLATED PIVOT LOCKING BAR - BOTTOM OF BAR TO BE 5mm ABOVE DOOR THRESHOLD

WINDOW SCHEDULE											
TAG	SIZE H x W	QTY	LOCATION	HEIGHT	OPENING	COLOUR	KEYING	ARCHITRAVE	GLASS	BLINDS	NOTES
W1	1200 x 1180mm	2	EXTERNAL	900 AFFL	1210 x 1190mm CUT-OUT	WHITE	-	PVC	CLEAR	NIL	TAPE & SILICON SEAL TOP SIDES. GAL. SEC. BARS BOLT FIX w/NYLOC NUTS @ 4 CORNERS

ELECTRICAL LEGEND			
ITEM	DESCRIPTION	HEIGHT	QTY
EDB	ELECTRICAL DISTRIBUTION BOARD	-	1
POE	ELECTRICAL SUPPLY POINT OF ENTRY	1800 AFFL	1
	2xSL 9732/40cw LED LIGHTS - SURFACE MOUNT	C/MNTD	2
	SINGLE LIGHT SWITCH	1300 AFFL	1
	SINGLE GPO - 10 AMP DOUBLE POLE	1765 AFFL	3
	SINGLE GPO - 10 AMP DOUBLE POLE	1765 AFFL	-
	DOUBLE GPO - 10 AMP DOUBLE POLE	1475 AFFL	4
	DOUBLE GPO - 10 AMP DOUBLE POLE	375 AFFL	1



THIS SPECIFICATION TO BE COMPLIANT IN CONJUNCTION WITH THE COATES HIRE PURCHASE SPECIFICATIONS (PLANT) PART 2 - EQUIPMENT TYPE AND PART 3 - COMMON REQUIREMENTS WITH MBS MARK UPS DATED 21.06.17

FOR CONSTRUCTION



132 WARREN RD, SMITHFIELD NSW 2164  
 TEL: 1800 217 131 D: (02) 8718 2500  
 FAX: (02) 8718 2599

PROJECT / TYPE : PROJECT: **COATES HIRE COMMONWEALTH GAMES 6.0 x 3.0m SHELL**

SIGNATURE: \_\_\_\_\_  
 NAME: \_\_\_\_\_  
 DATE: \_\_\_\_\_

© COPYRIGHT. THE INFORMATION IDEAS AND CONCEPTS CONTAINED IN THIS DOCUMENT ARE CONFIDENTIAL. THE RECIPIENT(S) OF THIS DOCUMENT IS/ARE PROHIBITED FROM DISCLOSING SUCH INFORMATION, IDEAS AND CONCEPTS TO ANY PERSON WITHOUT THE PRIOR WRITTEN CONSENT OF MODULAR BUILDING SYSTEMS Pty. Ltd

DATE: 15.01.2018 TITLE: **PLAN- GENERAL ARRANGEMENT**

DRAWN BY: TW

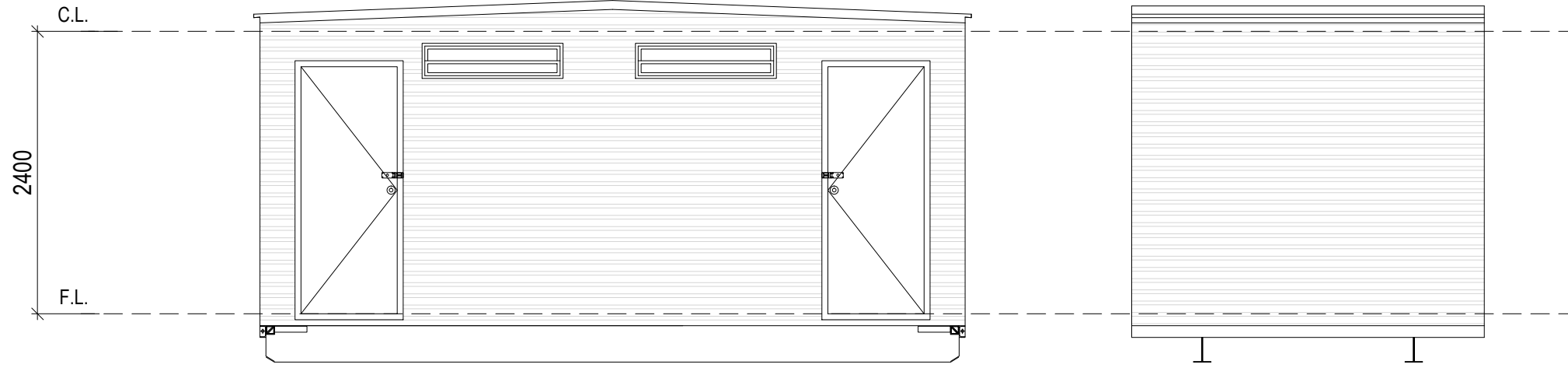
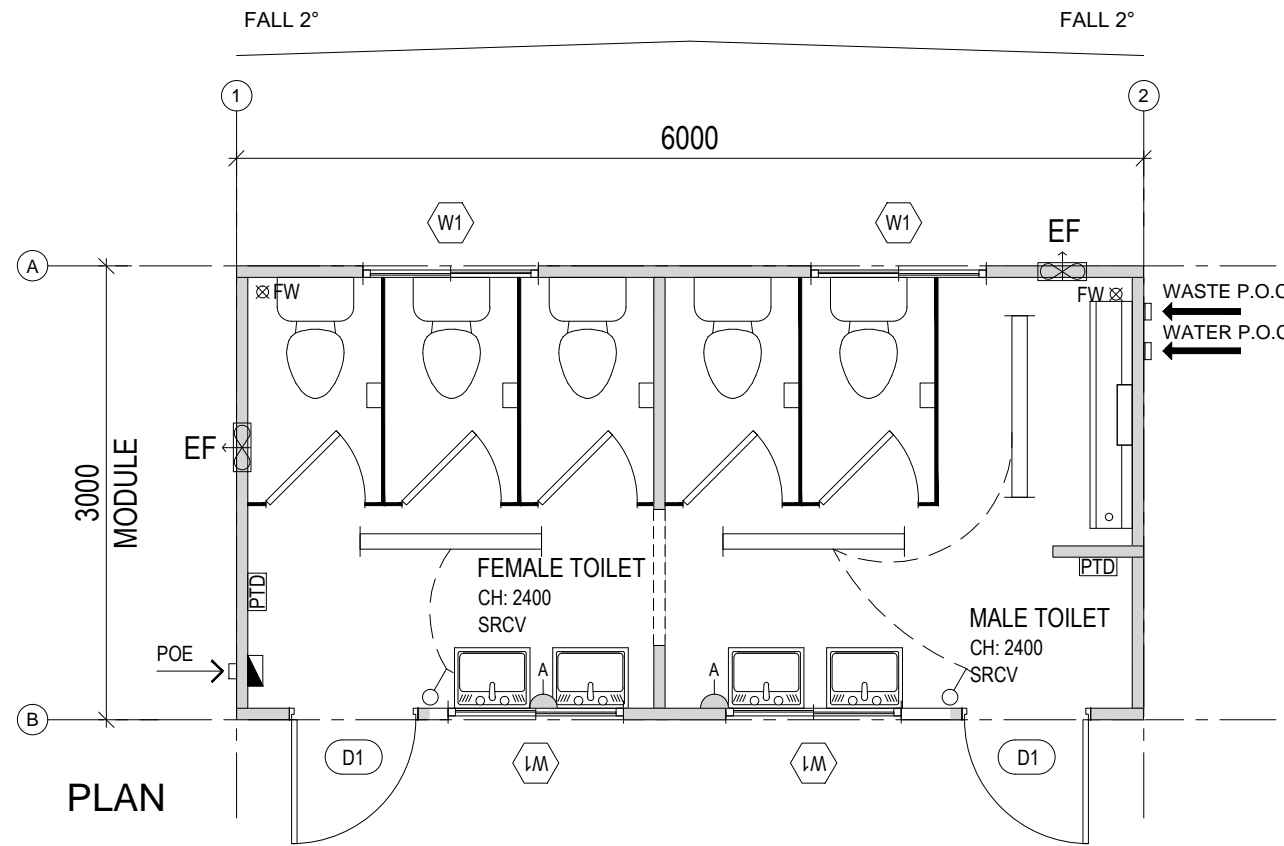
CHECKED BY: DT DRAWING NUMBER: **MS-200108-101** BUILDING NUMBER: **#0000**

SCALE: SHOWN QUOTATION NUMBER: 200108 REV: [1]

ISSUE	AMENDMENT	BY	DATE
1	FOR CONSTRUCTION	TW	15.01.2018

## DESIGN SPECIFICATION

BASEFRAME / REFER BASEFRAME LAYOUTS FOR DETAILS	
BEARER	310 UB
OUTRIGGER/SPREADER	100 x 50mm PFC
BRACING ANGLE	50 x 50 x 5mm EQUAL ANGLE
END MEMBER	100 x 50mm PFC
LIFTING MECHANISMS	EXTENDABLE OUTRIGGERS
TOW LUG	10mm PLATE / Ø30mm HOLE
STEELWORK TREATMENT	PRIMED WITH RED OXIDE / FINISHED WITH BLACK ENAMEL
FLOOR FRAME / REFER BASEFRAME LAYOUTS FOR DETAILS	
JOISTS	C10015 @ 480 CENTRES
CAPPER	C10415
END JOIST	100 x 100 x 4mm SHS
FLOORING	
FLOOR SHEET	15mm TONGUE AND GROOVE PLYWOOD F11
FLOOR COVERING	2.0mm NON-SLIP VINYL - POLYSAFE HYDRO EVOLVE TIGRIS #4257
SKIRTING	100mm COVERED VINYL
COMPLEXING	-
WATERPROOFING	NO
OTHER	DRY FLOOR WASTES
WALLS	
INTERNAL HEIGHT	2400mm
INTERNAL LINING	4mm POLYPLY PRE-FINISHED EMBOSSED PLYWOOD - GREY
INTERNAL TRIM	PVC D MOULD - WHITE (3 ROWS OF GREY SCREWS)
WALL INSULATION	-
EXTERNAL CLADDING	COLORBOND PANELRIB, LAID HORIZONTALLY - SURFMIST
EXTERNAL CORNER	HD 40x40x2.5mm D'GAL ANGLE
WALL FRAMES	
FRAMING	75 x 41 x 0.75mm G550 STEEL STUDS
STUD SPACING	400mm CTS
ROOF / CEILING	
CEILING TYPE	FLAT
CEILING LINING	4mm PRE-FINISHED PLYWOOD - MIRAGE PEARL
CEILING INSULATION	R 1.8 (75mm)
ROOF PITCH	2° CENTRE PITCH
ROOF CLADDING	TRIMDECK 0.42 BMT - ZINCALUME
ROOF INSULATION	-
UNDER BARGE FLASHING	ZINC
BARGE	WOODLAND GREY
GUTTER	-
DOWNPIPE	-
STEPDOWN FLASHING	30 x 60 STEP DOWN - WOODLAND GREY
ROOF / CEILING FRAMES	
FRAMING	75 x 41 x 0.75mm G550 STEEL STUDS
STUD SPACING	400mm CTS
ELECTRICS	
SPECIFICATION	TO AS3000, 3001, 3012( TO COATES HIRE PURCHASE SPECIFICATIONS)
S/W BOARD	P.O.E. LOCATED BEHIND SWITCHBOARD, POLY PLASTIC INTERNALLY MOUNTED SWITCHBOARD, 1800mm AFFL(TO CTR)



TYPICAL FRONT ELEVATION

TYPICAL END ELEVATION

### GENERAL ARRANGEMENT

SCALE: 1:50

DOOR SCHEDULE												
TAG	SIZE	QTY	LOCATION	COLOUR	FURNITURE	LOCKING	KEYING	ARCHITRAVE	GLASS	CLOSER	STOP	NOTES
D1	2040 x 920mm	2	EXTERNAL	WHITE	KNOB	PASSAGE	-	PVC	-	STD	YES	REBATED EDGE; SECURITY - ZINC PLATED HASP & STAPLE, CABIN HOOK

WINDOW SCHEDULE												
TAG	SIZE H x W	QTY	LOCATION	HEIGHT	OPENING	COLOUR	KEYING	ARCHITRAVE	GLASS	BLINDS	NOTES	
W1	280 x 1175mm	4	EXTERNAL	2020 AFFL	290 x 1190mm CUT-OUT	PEARL WHITE	-	PVC	OBS& PERMANENT VENT	-	TAPE & SILICON SEAL TOP SIDES.	

ELECTRICAL LEGEND			
ITEM	DESCRIPTION	HEIGHT	QTY
EDB	ELECTRICAL DISTRIBUTION BOARD	-	1
POE	ELECTRICAL SUPPLY POINT OF ENTRY	1800 AFFL	1
	2x28W FLURO LIGHT DIFFUSED - SURFACE MOUNT	C/MNTD	3
	SINGLE LIGHT SWITCH	1300 AFFL	2
	SINGLE GPO - 10 AMP	1550 AFFL	2
EF	EXHAUST FAN	-	2

ITEMS & EQUIPMENT SCHEDULE		
TAG	QTY	DESCRIPTION
A	5	TOILET SUITE , DUAL FLUSH w/HASP & STAPLE
B	4	S/S HAND BASIN (H&C) PUSHBUTTON TYPE w/ MIRROR OVER
C	2	PAPER TOWEL DISPENSER (ROLL TYPE)
-	-	-
E	1	S/S URINAL - 1500
NOTES:		
COATES SIGNS - 4 PER BUILDING @ TOP RIGHT CORNERS		
COATES ASSET TAGS - FIT BESIDE ENTRY DOOR @ LOCK		
WASTE OUTLET TO BE MIN. 70mm HIGHER THAN BOTTOM OF SKID		
5		TOILET CUBICLES IN WHITE

PRELIMINARY ISSUE

132 WARREN RD, SMITHFIELD NSW 2164  
 TEL: 1800 217 131 D: (02) 8718 2500  
 FAX: (02) 8718 2599

CLIENT APPROVAL

SIGNATURE: \_\_\_\_\_

NAME: \_\_\_\_\_

DATE: \_\_\_\_\_

PROJECT: **COATES - CAPEX**  
**3.0 x 6.0m M/F TOILET**

© COPYRIGHT. THE INFORMATION IDEAS AND CONCEPTS CONTAINED IN THIS DOCUMENT ARE CONFIDENTIAL. THE RECIPIENT(S) OF THIS DOCUMENT IS/ARE PROHIBITED FROM DISCLOSING SUCH INFORMATION, IDEAS AND CONCEPTS TO ANY PERSON WITHOUT THE PRIOR WRITTEN CONSENT OF MODULAR BUILDING SYSTEMS Pty. Ltd

DATE: 09.10.2015

TITLE: **PLAN- GENERAL ARRANGEMENT**

DRAWN BY: ML

CHECKED BY: DT

SCALE: SHOWN

DRAWING NUMBER: **MS-200305-B20-101**

QUOTATION NUMBER: 200305

BUILDING NUMBER: **#0000**

REV: E SHEET A3

ISSUE	AMENDMENT	BY	DATE
E	AS CLOUDED	ML	04.05.18
D	AS CLOUDED	ML	06.02.18
C	REVISED SPECIFICATIONS	TW	18.08.17
B	PRELIMINARY ISSUE	SN	27.07.16
A	PRELIMINARY ISSUE	ML	09.10.15